



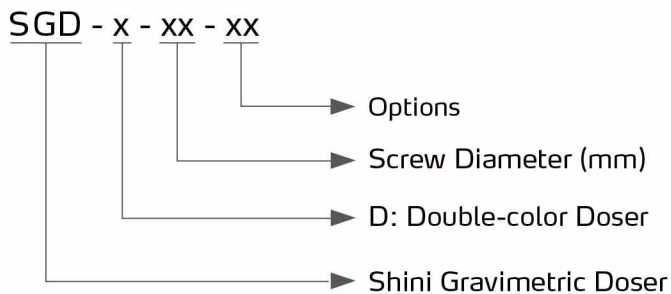
Gravimetric Doser

SGD-12



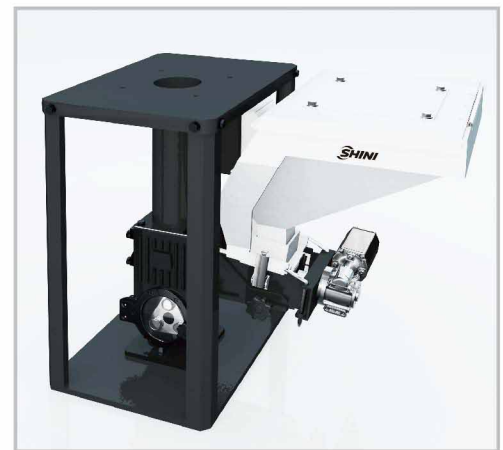
Refer carefully to this manual before operation.

■ Coding Principle

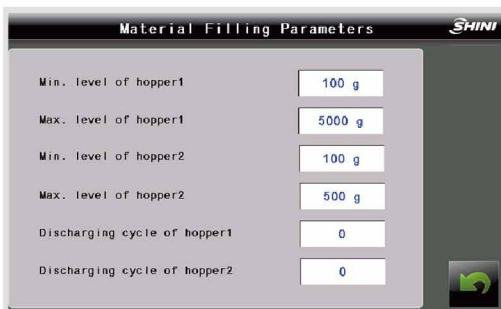


■ Features

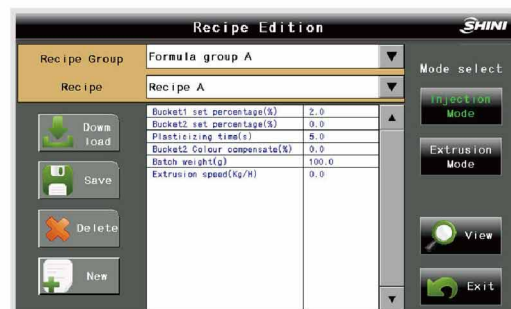
- Chrome coating dosing screw for long durability.
- Modular design for easy color change and maintenance.
- Standard neckpiece with hopper magnets for better processing machine protection.
- Uninterrupted production recovery in case of power failure.
- Loss-it-weight dosing control for better dosing precision.
- Modbus TCP data communication via ethernet.
- Masterbatch blockage alarm via motor overload.



Heavy Base (Optional)



Parameter Setting Mode

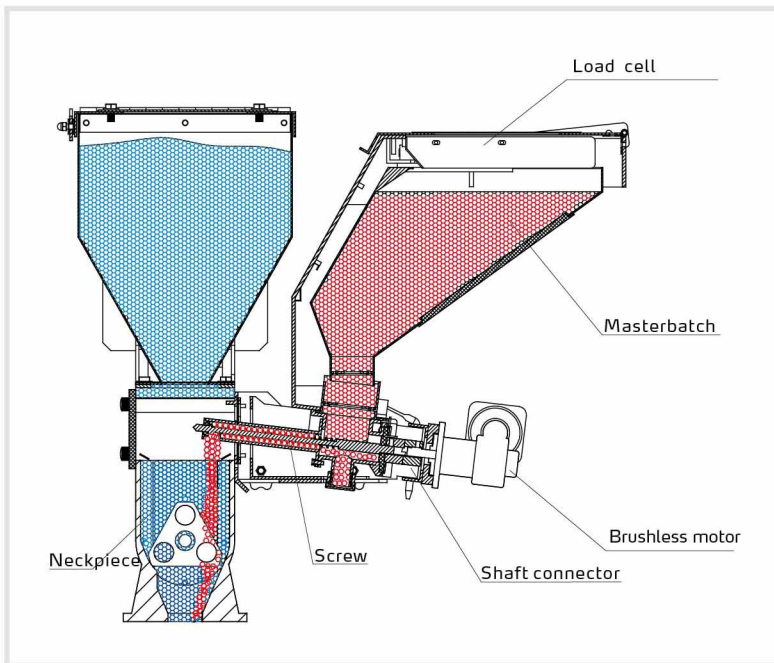


Recipe Edit Menu

■ Options

- Heavy base option for mounting large drying hopper of SHD-100~300 or SHD-160U~450U, Add "HB" at the end of the model code.
- Optional mixer at neckpiece. Add "MS" at the end of the model code.
- Optional main material hopper. Add "MH" at the end of the model code.

■ Working Principle



3D animation
(Tencent)



3D animation
(Youtube)

■ Application

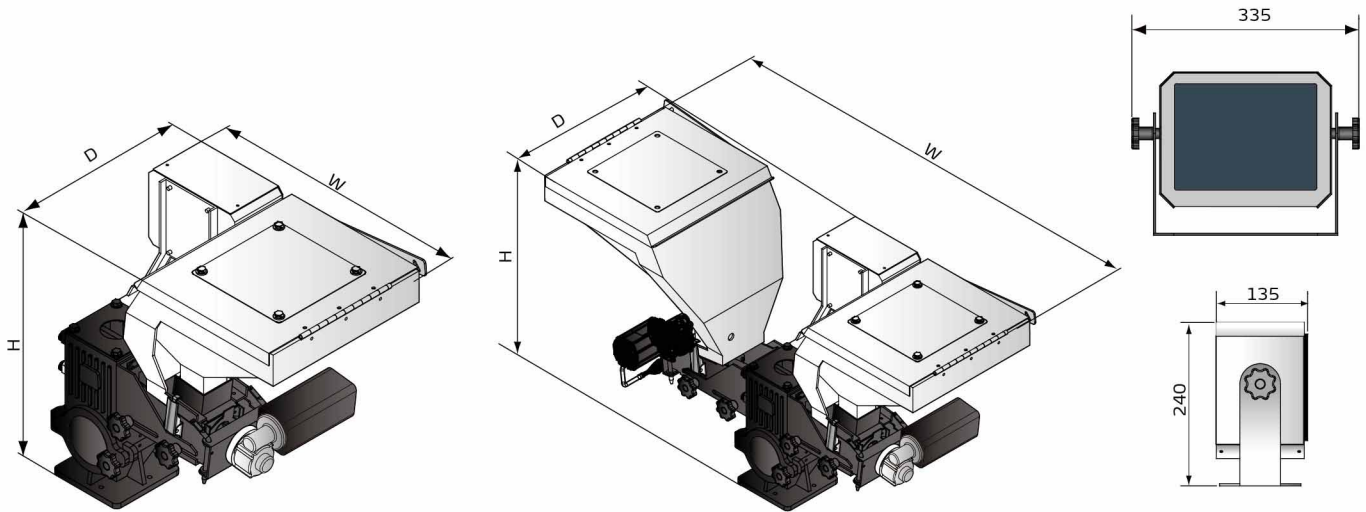
SGD gravimetric doser is suitable for continuous precision dosing of masterbatch to the plastic process machine. The unit has a selection of four dosing screw sizes for different throughput needs. The unit can support up to two sets of dosing screws for various material receipt. The lose-it-weight technology allows doser to measure and correct dosing to realize constant dosing precision.

SGD synchronizes dosing speed in extruder mode via analog 0~10V input from the extruder.

Combination of Shini VL venturi loader realizes auto conveying of material to SGD at all time.

SGD Series

Outline Drawings



Specifications

Model		Single Color Unit				Double Color Unit	
		SGD-12	SGD-16	SGD-20	SGD-30	SGD-D	
Motor Power (kW, 50/60Hz)		0.06				0.06×2	
Output Power of Mixer (kW, 50 / 60Hz)		0.09					
Screw External Dia.	mm	12	16	20	30	**	
	inch	0.47	0.63	0.79	1.18	**	
Output Capacity	kg/hr	0.04~3.6	0.1~16	1.0~30	3.0~60	*	
	lb/hr	0.09~7.9	0.22~35.3	2.2~66	6.6~132	*	
Storage Hopper	L	10					
	gal	2.64					
Gear Ratio		38:1					
Main Material Hopper	L	○(12)					
	gal	○(4.0)					
Mixer		○					
Heavy-duty Base		○					
Dimensions	H	mm	610				
		inch	24				
	W	mm	645				1090
		inch	25.4				42.9
	D	mm	470				
		inch	18.5				
Weight	kg	36				54	
	lb	79				119	

Notes: 1) "*" stands for the output capacity depends on model selected, data of the single color doser can be a reference. For example: SGD-D-12/16, output: capacity 0.14~19.6kg/hr(0.3~43.2lb/hr).

2) "**" stands for external dia. of screw is up to model selected.

3) "●" stands for standard, "○" stands for options, "-" stands for none.

4) The output capacity is obtained from continues throughput of masterbatch with a bulk density of 1.2kg/L and diameter of 2~3mm.

5) Power supply: 1Φ, 115/230V, 50/60Hz.

We reserve the right to change specifications without prior notice.