



Variable Frequency Compressor

SVFC-50S

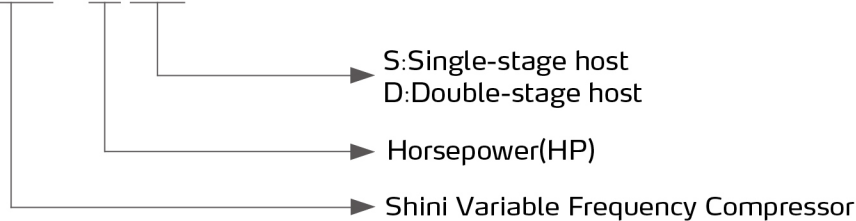


Refer carefully to this manual before operation.

SVFC Series

■ Coding Principle

SVFC - xx S/D



■ Features

- Adopt 7" color panel for easy operation;
- The centrifugal blower design is more energy-saving than conventional blower, with faster cooling effect.
- Butterfly inlet valve can realize full automatic energy-saving regulation;
- Adopt two-stage compressor host that ensures the air volume error within 3% for stable airflow.
- The airflow temperature can be effectively controlled by zones as it has the design of high temperature gas upper exhaust, with low temperature gas side inlet.
- Adopt permanent magnet synchronous motor collocating a specialized energy-saving frequency converter, its rotation speed is half that of traditional motor, with the energy efficiency of 90% and energy efficiency Index of IE4.
- The EPC network module and AI technology help to realize remote management.

■ Application

Shini variable frequency compressor, air compressor, refrigeration dryer and filter compose the power source compressed air station for industrial production, which can compress the air to 8-12 kgf/cm² and processing for production. It is widely used in equipment requiring high-pressure gas in industry, agriculture, and service industries.

■ Accessories

Gas Accumulator



A gas storage tank is a pressure vessel specifically designed to store compressed air, mainly used for buffering and stabilizing system pressure, avoiding frequent loading and unloading of compressors, and removing most of the liquid water. Comprising of an air compressor, a refrigerated dryer, and a filter to form a power source compressed air station for

Air Dryer



Untreated compressed air contains moisture, aerosols, and dust particles, which may bring huge risk and damage terminal equipment when it is used directly. So it needs the air dryer to provide clean and dry compressed air that ensure stable operation of the air dynamic system.

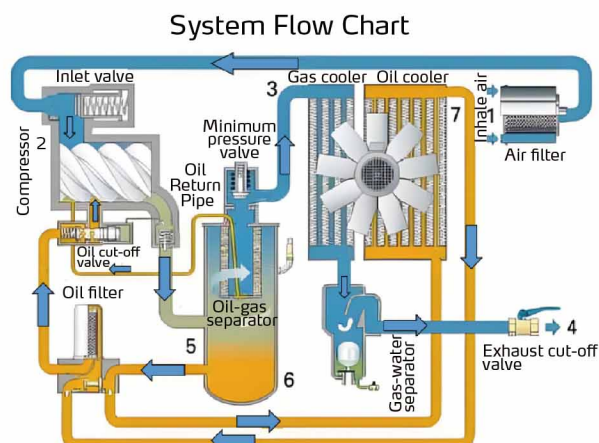
Filter



It is well-known that dust particles always exist in the atmosphere. After being compressed by a compressor, the concentration of dust particles reaches over 8 times. For the working principle of air compressor, the compressed air also contains traces of oil mist. The humid compressed air can cause corrosion and other bad effects, which will result in production stoppage and high maintenance costs. So it needs the dryer to filtrate the moisture, oil mist, and impurities in the compressed air to ensure stable operation of the air dynamic system.

Working Principle

After being filtered by the filter, the air flows into the compressor host through the inlet valve and mixes with lubricating oil before being compressed into the oil-gas separator. Then, it enters the gas-water separator after being cooled by the gas cooler, which can be used after being separated from the water; Meanwhile, the compressed lubricating oil enters the oil filter through the oil cooler, and flows back to the compressor host through the oil cut-off valve after the oil has been filtrated from the impurities.



Specifications

Model	SVFC-30S	SVFC-50S	SVFC-100S	SVFC-150S	SVFC-30D	SVFC-50D	SVFC-100D	SVFC-150D
Exhaust gas volume/	3.8/0.8	6.8/0.8	12.8/0.8	20.0/0.8	4.2/0.8	7.2/0.8	16.5/0.8	23.7/0.8
Exhaust gas pressure	3.0/1.0	4.7/1.0	9.5/1.0	15.1/1.0	3.9/1.0	5.6/1.0	12.3/1.0	20.0/1.0
(m ³ /min/MPa)	2.9/1.2	4.6/1.2	9.0/1.2	12.1/1.2	-	-	10.6/1.3	17.5/1.3
Motor Power(KW)	22	37	75	110	22	37	75	110
Noise (DB)	73±2	74±2	75±2	82±2	70±2	72±2	73±2	78±2
Outlet Dia.	G1-1/4	G1-1/2	DN50	DN80	1-1/4	G1-1/2	DN50	DN80
L(mm)	1030	1080	1500	2500	1200	1300	2500	2980
W(mm)	830	900	1400	1470	830	950	1600	1850
H(mm)	1145	1370	1850	1840	1200	1350	1700	2020
Weight(KG)	362	850	1205	2400	405	609	2350	3880
Accumulator	CAT1	CAT2	CAT3	CAT3	CAT1	CAT2	CAT3	CAT3
L(mm)	800	1000	1200	1200	800	1000	1200	1200
W(mm)	800	1000	1200	1200	800	1000	1200	1200
H(mm)	2202	2810	2920	2920	2202	2810	2920	2920
Weight(KG)	193	305	499	499	193	305	499	499
Caliber(inch)	RP1-1/2	RP2	DN65	DN80	RP1-1/2	RP2	DN80	DN80
RefrigerationDryer	LY-D30AH	LY-D30AH	LY-D100AH	LY-D150AH	LY-D50AH	LY-D75AH	LY-D120AH	LY-D200AH
L(mm)	500	600	650	700	600	650	650	1550
W(mm)	980	1030	1350	1450	1030	1250	1350	850
H(mm)	930	1000	1300	1430	1000	1150	1300	1600
Weight(KG)	95	115	225	345	115	120	235	530
Power(kW)	1.1	1.5	2.8	5.2	1.5	2.2	2.8	5.5
Caliber(inch)	G1-1/2	G1-1/2	DN65	DN80	G1-1/2	G2	DN80	DN80
Filter	LY-D035AO /AA/AX	LY-D060AO /AA/AX	LY-D0120AO /AA/AX	LY-D0220AO /AA/AX	LY-D060AO /AA/AX	LY-D090AO /AA/AX	LY-D150AO /AA/AX	LY-D240AO /AA/AX
Caliber(inch)	RC1-1/2	RC1-1/2	RC2-1/2	DN80	RC1-1/2	RC2	RC2-1/2	DN80

Notes: Power supply: 3Φ, 400VAC, 50Hz.

We reserve the right to change specifications without prior notice.

Shini Group

Addr: No. 23, Minhe St., Shulin Dist.,
New Taipei, Taiwan

Tel: +886 2 2680 9119

Fax: +886 2 2680 9229

Email: shini@shini.com

Factories:

- Taiwan
- Dongguan
- Pinghu
- Ningbo
- Chongqing
- Pune

2024-10-15-04 Copyrights Reserved.

www.shini.com