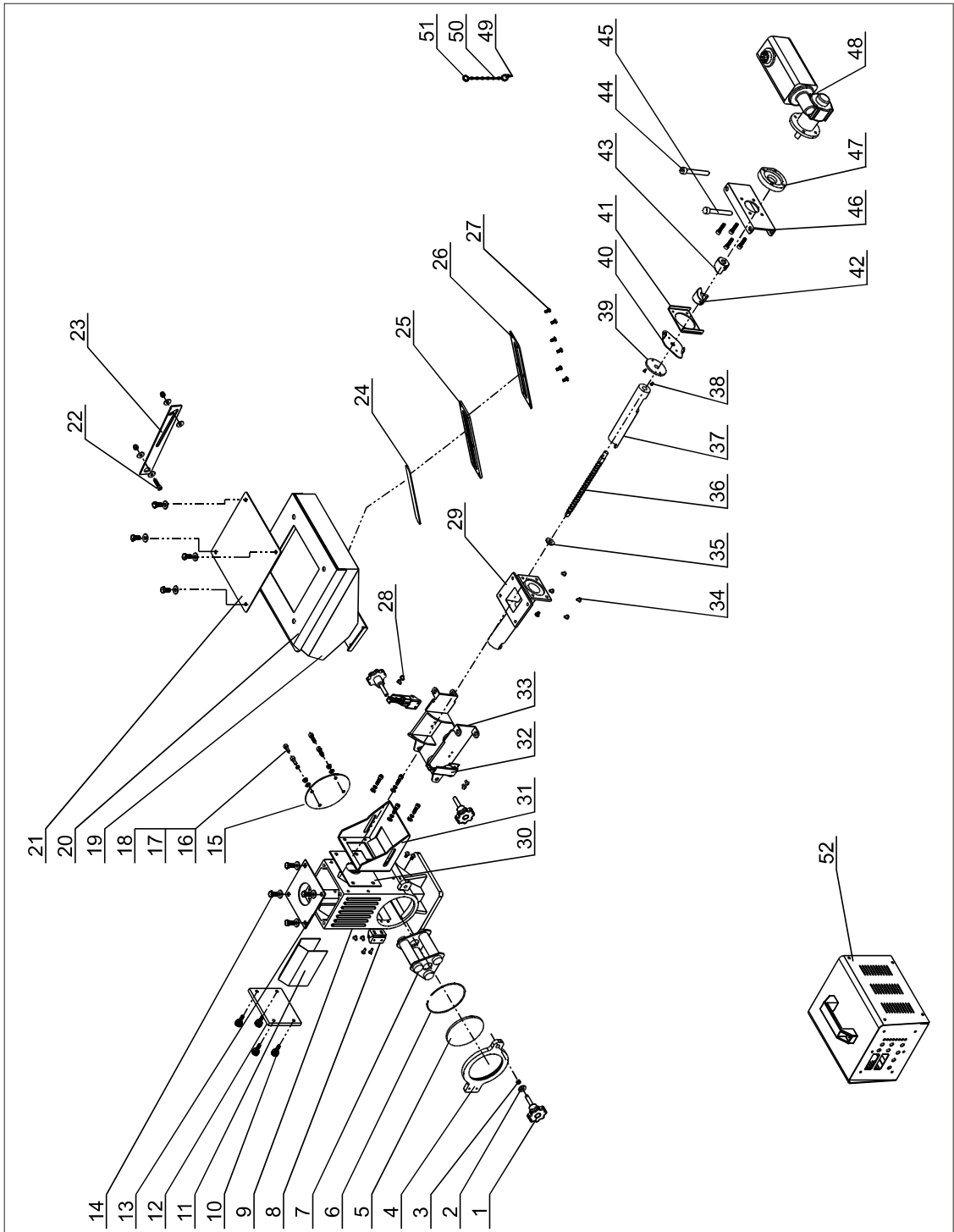


2.3 Assembly Drawing

2.3.1 Assembly Drawing Single-color Doser



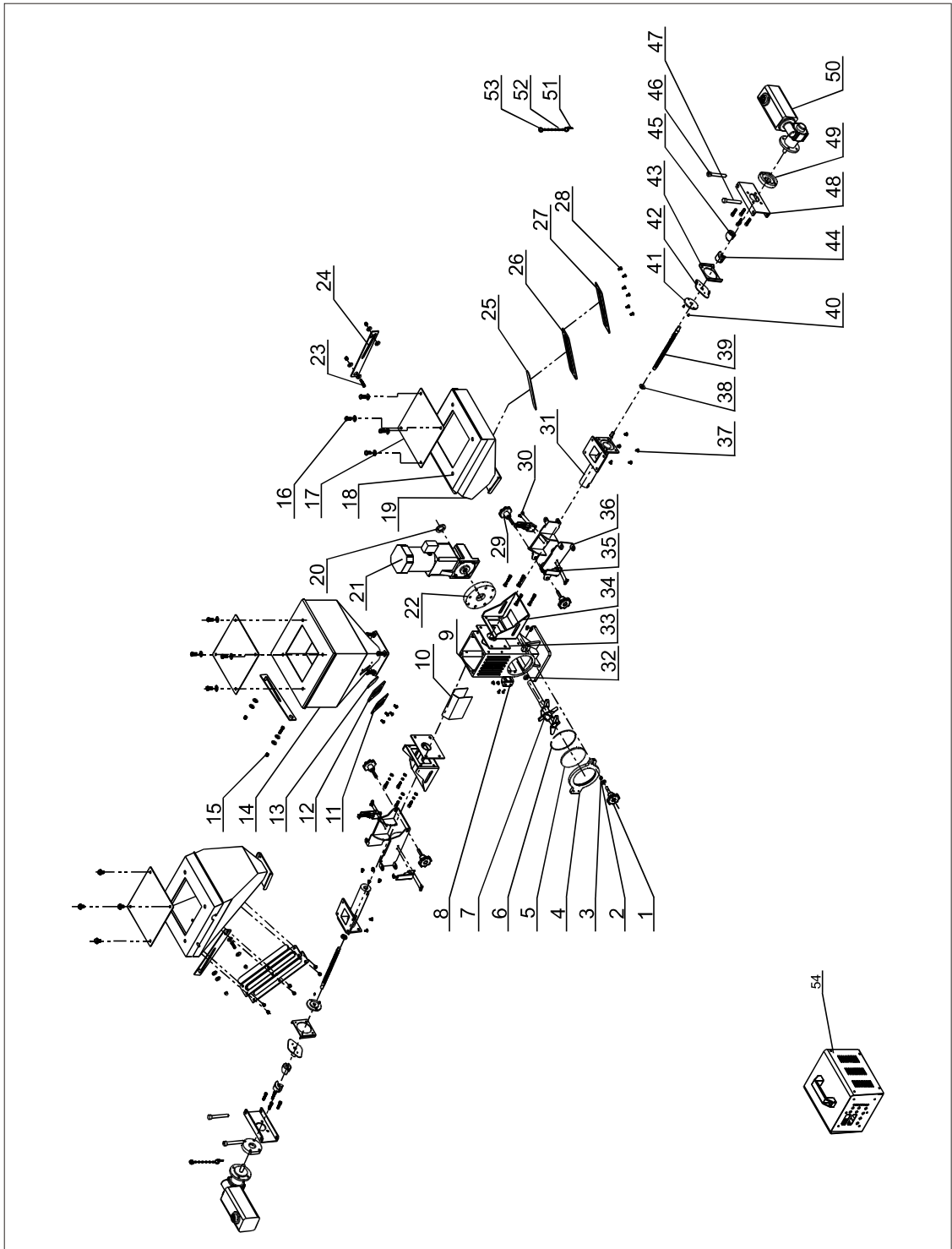
2.3.2 Parts List of Single-color Doser

No.	Name	Part No.
1	Five-star handle btype m8 × 35	YR40083500000
2	Flat gasket 8	YW66081900000
3	Hex nuts m8	YW64000800100
4	Base door	-
5	Tempered glass	YW70125000000
6	Spring of magnetic base	YW01005000100
7	Three-tube magnetic frame	BY10500010050
8	Hinge of magnetic base	BL01005020020
9	Base	-
10	Manual tighten upscrew m6 × 6 × 16	YW69616100000
11	Material fender	-
12	End plate	-
13	Base cover board	-
14	External hexagonal screw m8 × 16	YW60081600100
15	Rear cover plate	-
16	Hex socket screw m6 × 20	YW61062000200
17	Flat gasket 6	YW66061200000
18	Spring gasket 6	YW65006000100
19	Storage hopper	-
20	Store hopper cover	-
21	Store material cover plate	BW09202000000
22	Hex socket screw m6 × 25	YW61062500000
23	Hopper connection plate	-
24	Acrylic six holes	YR40001200000
25	Fastener for sightglass window six holes	YR40000600000
26	Iron sight glass window six holes	YW09000600000
27	Cross socket head cap screw m5 × 10	YW62051000100
28	Cross socket head cap screw m4 × 10	YW62041000100
29	Convey pipeline	-

No.	Name	Part No.
30	Material keeping leather	-
31	Side fixed housing	-
32	Spring adjustable buckle	YW02003000400
33	Body fixed bracket1	-
34	Hex socket screw m5 × 10	YW61051000100
35	Screw accessories 2	-
36	Φ12 screw shaft	-
37	Screw shaft Φ12 sleeve	-
38	Cruciform screw m3 × 6	YW61030600100
39	Screw accessories 3	-
40	Screw connection of	-
41	Conveying connection board	-
42	Shaft coupler 1	-
43	Shaft coupler 2	-
44	Motor fixed rotation pin 2	-
45	Motor fixed rotation pin 1	-
46	Body fixed bracket 2	-
47	Flange	-
48	Gearmotor	-
49	Screw m3 × 10-Φ5	-
50	Dia. 1.2 hinge	YW90120000000
51	Stainless steel key 1.2 × 16	-
52	Electrical control box	-

*Indicates latent wearing parts. **Indicates latent wearing parts and it's suggested to back them up. Before purchasing parts, the version of Brochure should be confirmed to accord part number with actual goods.

2.3.3 Assembly Drawing Two-color Doser



2.3.4 Parts List of Two-color Doser

No.	Name	Part No.
1	Knob b type m8 × 45	-
2	Flat gasket 8	YW66081900000
3	Nut m8	YW64000800100
4	Base door	-
5	Tempered glass	YW70125000000
6	Spring of magnetic base	YW01005000100
7	Mixer welding figure	-
8	Hinge of magnetic base	BL01005020020
9	Base	BW20000000010
10	Striker plate	-
11	Four -way acryliron sheet	YW09000400000
12	Four -way acryl stringency	YR40000400000
13	Four-way acryl	YR40001200100
14	Main hopper welding figure	-
15	Acorn nut m6	YW64006000100
16	Hex screw m8 × 16	YW60081600100
17	Storage hopper lid	BW09202000000
18	Storage hopper lid plate	-
19	Storage hopper	-
20	Blending motor cover washer	-
21	Blending motor	YM50992200000
22	Fixed flange for mixing	-
23	Hex socket screw m6 × 25	YW61062500000
24	Hopper connection plate	-
25	Six-way acryl	YR40001200000
26	Six-way acryl stringency	YR40000600000
27	Six-way acryl iron sheet	YW09000600000
28	Cross socket head cap screw m5 × 10	YW62051000100
29	Knob b type m8 × 35	YR40083500000

No.	Name	Part No.
30	Cross socket head cap screw M4 × 10	YW62041000100
31	Convey pipeline	-
32	NSK bearing 6003	YW11600300000
33	Material shutter	-
34	Side fixed housing	-
35	New snap hook adjustable	YW02003000400
36	Body fixed bracket 1	-
37	Cruciform screw M5 × 10	YW61051000100
38	Screw shaft option 2	-
39	Screw shaft Φ16	-
40	Cruciform screw m3 × 6	YW61030600100
41	Screw shaft option 3	-
42	Screw shaft connection of	-
43	Conveying connection board	-
44	Shaft coupler 1	-
45	Shaft coupler 2	-
46	Motor fixed rotation pin 2	-
47	Motor fixed rotation pin 1	-
48	Body fixed bracket 2	-
49	Feeding motor flange	-
50	Gearmotor	-
51	Screw M3 × 10	-
52	1.2 hinge	YW90120000000
53	A keyring 1.2 × 16	-
54	Electrical control box	-

*Indicates latent wearing parts. **Indicates latent wearing parts and it's suggested to back them up. Before purchasing parts, the version of Brochure should be confirmed to accord part number with actual goods.