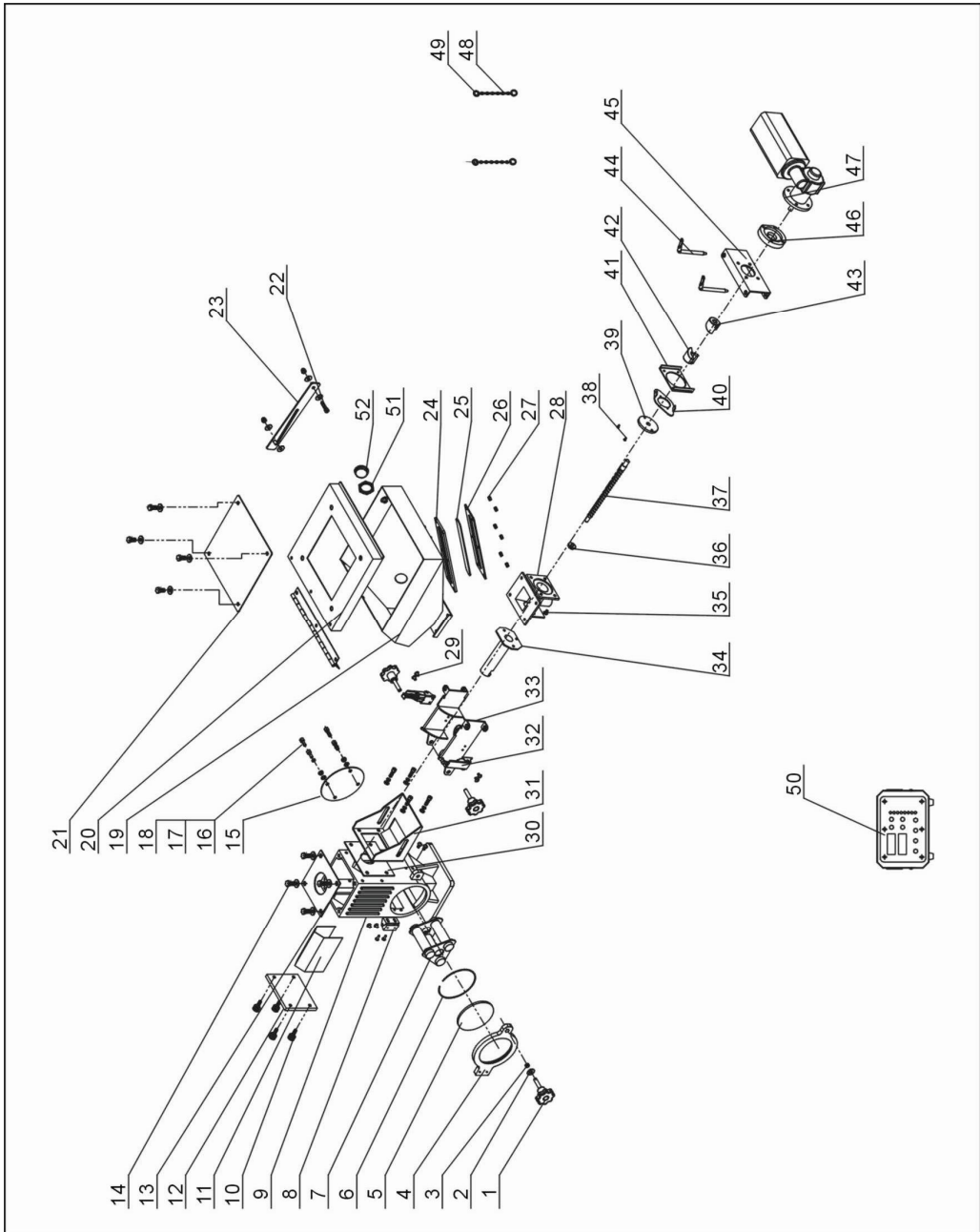


2.2 Assembly Drawing and Parts List

2.2.1 Assembly Drawing of Single-color Doser



Note: Please refer to material List 2.3.2 for specific explanation of the Arabic numbers in parts drawing.

Picture 2-3: Assembly Drawing of Single-color Doser

2.2.2 Parts List of Single-color Doser

Table 2-1: Parts List of Single-color Doser (SCM-E-38-16/14/12)

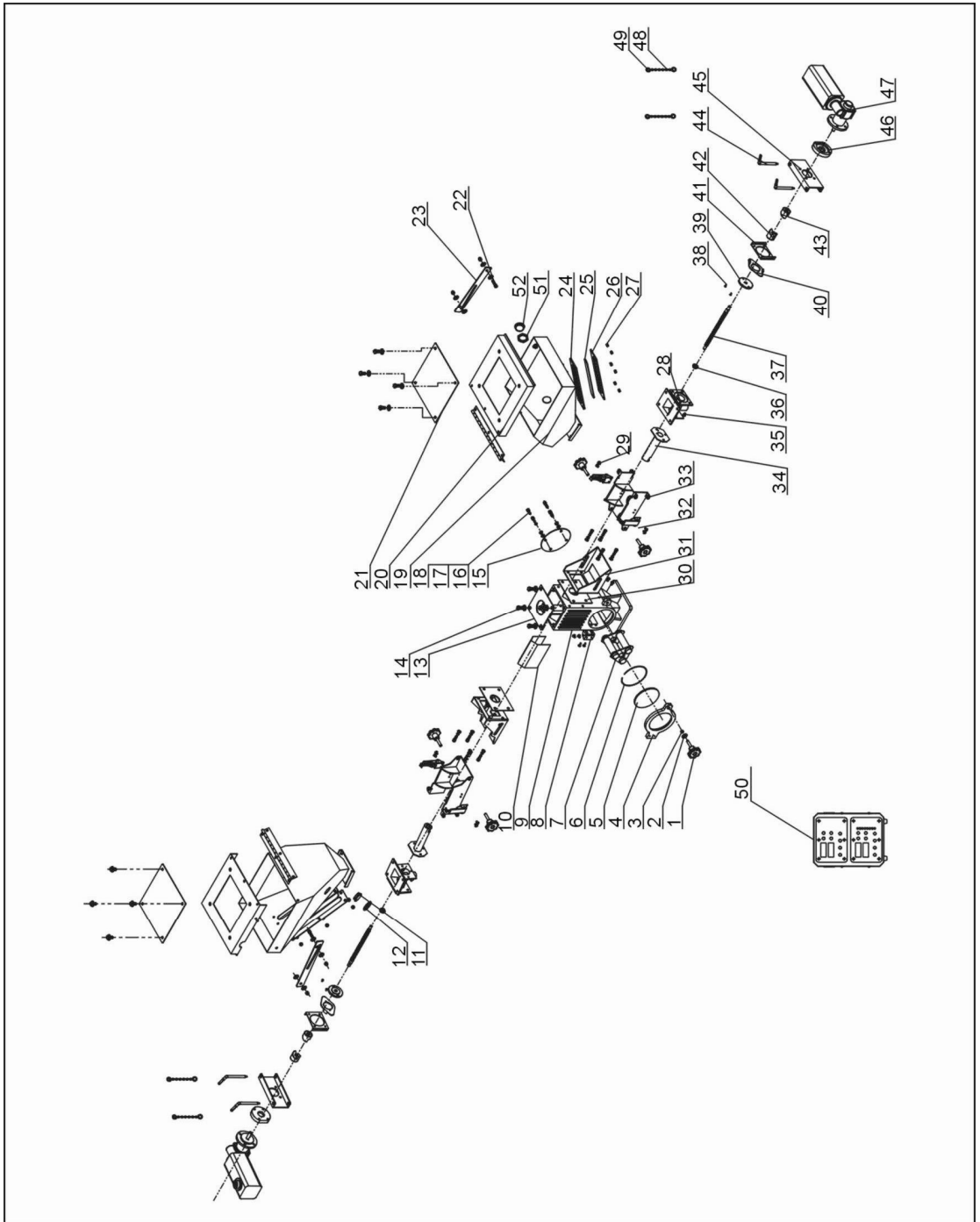
No.	Name	Part number	No.	Name	Part number
1	Knob B type M8×35	YR40083500000	27	Cross socket head cap screw M5×10	YW62051000100
2	Flat gasket 8	YW66081900000	28	Convey pipeline	-
3	Hex screw M8	YW64000800100	29	Cross socket head cap screw M4×10	YW62041000100
4	Base door	-	30	Material shutter	-
5	Tempered glass	YW70125000000	31	Side fixed housing	-
6	Elastic ring for hole use	YW69869800000	32	New adjustable snap hook	YW02003000400
7	Three-tube magnetic frame	BY10500010050	33	Body fixed bracket 1	-
8	Hinge of magnetic base	BL01005020020	34	Doser screw Φ12 sleeve	-
9	Base	-	35	Flat internal hex screw M5×10	YW61051000100
10	Manual tighten up screw M6×6×16	YW69616100000	36	Screw accessory 2	-
11	Striker plate	-	37	Screw Φ12	-
12	End plate of doser	-	38	Flat cross head cap screw M3×6	YW61030600100
13	Base cover	-	39	Screw accessory 3	-
14	External hex screw M8×16	YW60081600100	40	Screw connection	-
15	Rear cover	-	41	Conveying connection board	-
16	Internal hex screw M6×20	YW61062000200	42	Shaft coupler 1	YW61030600100
17	Flat gasket 6	YW66061200000	43	Shaft coupler 2	YW61030600100
18	Spring gasket 6	YW65006000100	44	Motor fixed rotation pin 2	-
19	Storage hopper	-	45	Body fixed bracket 2	-
20	Storage hopper lid	-	46	Feeding motor flange	-
21	Storage hopper lid plate	BW09202000000	47	Gear motor	-
22	internal hex screw M6×25	YW61062500000	48	1.2 hinge	YW90120000000
23	Hopper connection plate	-	49	Stainless steel key ring 1.2×16	YW00151300000
24	Six-way acryl stringency	YR40000600000	50	control box combination	-
25	Six-way acryl	YR40001200000	51	Choke plug screw of level sensor M30×1.5	YR30301500000
26	Six-way acryl iron sheet	YW09000600000	52	Choke plug of level sensor	BR30008400050

* means possible broken parts.

** means easily broken part and spare a backup is suggested.

Please confirm the version of manual before placing the purchase order to guarantee that the item number of the spare parts is in accordance with the real object.

2.2.3 Assembly Drawing of Double Color Doser



Notes: Please refer to material List 2.3.4 for specific explanation of the Arabic numbers in parts drawing.

Picture 2-3: Assembly Drawing of Double Color Doser

2.2.4 Parts List of Double Color Doser

Table 2-2: Parts List of Double Color Doser

No.	Name	Part number	No.	Name	Part number
1	Knob B type M8×35	YR40083500000	26	Six-way acryl iron sheet	YW09000600000
2	Flat gasket 8	YW66081900000	27	Cross socket head cap screw M5×10	YW62051000100
3	Hex screw M8	YW64000800100	28	Convey pipeline	-
4	Base door	-	29	Cross socket head cap screw M4×10	YW62041000100
5	Tempered glass	YW70125000000	30	Material shutter	-
6	Elastic ring for hole use	YW69869800000	31	Side fixed housing	-
7	Three-tube magnetic frame	BY10500010050	32	New adjustable snap hook	YW02003000400
8	Hinge of magnetic base	BL010050200200	33	Body fixed bracket 1	-
9	Base	-	34	Screw shaft φ 12 sleeve	-
10	Striker plate	-	35	Flat internal hex screw M5×10	YW61051000100
11	Choke plug of level sensor	BR30008400050	36	Screw accessory 2	-
12	Choke plug Screw of level sensor M30×1.5	YR30301500000	37	Screw Φ12	-
13	Base cover	-	38	Flat cross head cap screw M3×6	YW61030600100
14	External internal hex screw M8×16	YW60081600100	39	Screw accessory 3	-
15	Rear cover	-	40	Screw connection sheet	-
16	Internal hex screw M6×20	YW61062000200	41	Conveying connection board	-
17	Flat gasket 6	YW66061200000	42	Shaft coupler 1	YW61030600100
18	Spring gasket 6	YW65006000100	43	Shaft coupler 2	YW61030600100
19	Storage hopper	-	44	Motor fixed rotation pin 2	-
20	Storage hopper lid	-	45	Body fixed bracket 2	-
21	Storage hopper lid plate	BW09202000000	46	Feeding motor flange	-
22	Internal hex screw M6×25	YW61062500000	47	Gear motor	-
23	Hopper connection plate	-	48	1.2 hinge	YW90120000000
24	Six-way acryl stringency	YR40000600000	49	Stainless steel key ring 1.2×16	YW00151300000
25	Six-way acryl	YR40001200000	50	Control box combination	-

* means possible broken parts.

** means easily broken part and spare a backup is suggested.

Please confirm the version of manual before placing the purchase order to guarantee that the item number of the spare parts is in accordance with the real object.