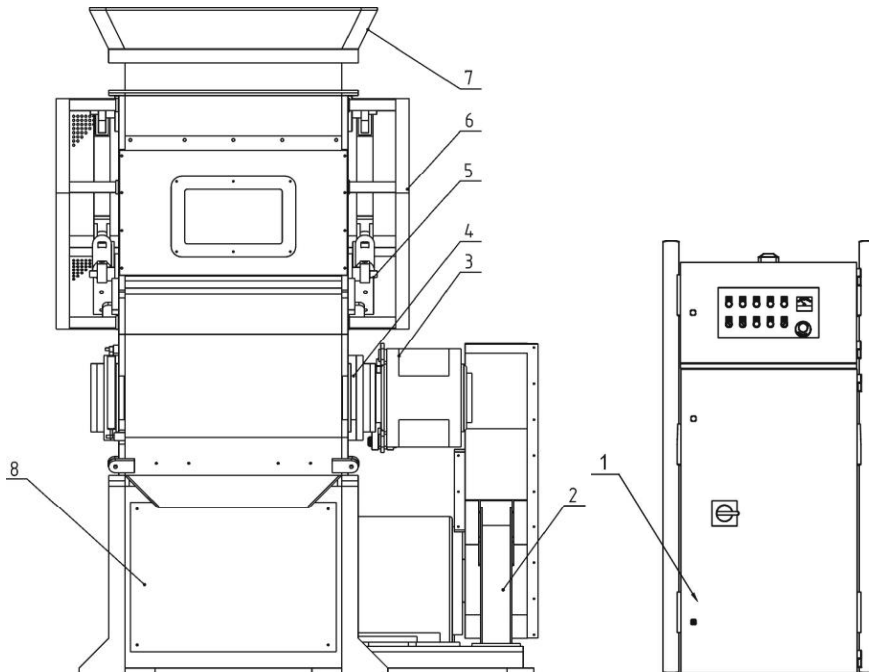


2.3 Assembly Drawing

2.3.1 Assembly Drawing



Note: Please refer to 2.3.2 material list about the parts code.

Picture 2-7: Assembly Drawing

2.3.2 Parts List

Table 2-1: Parts List

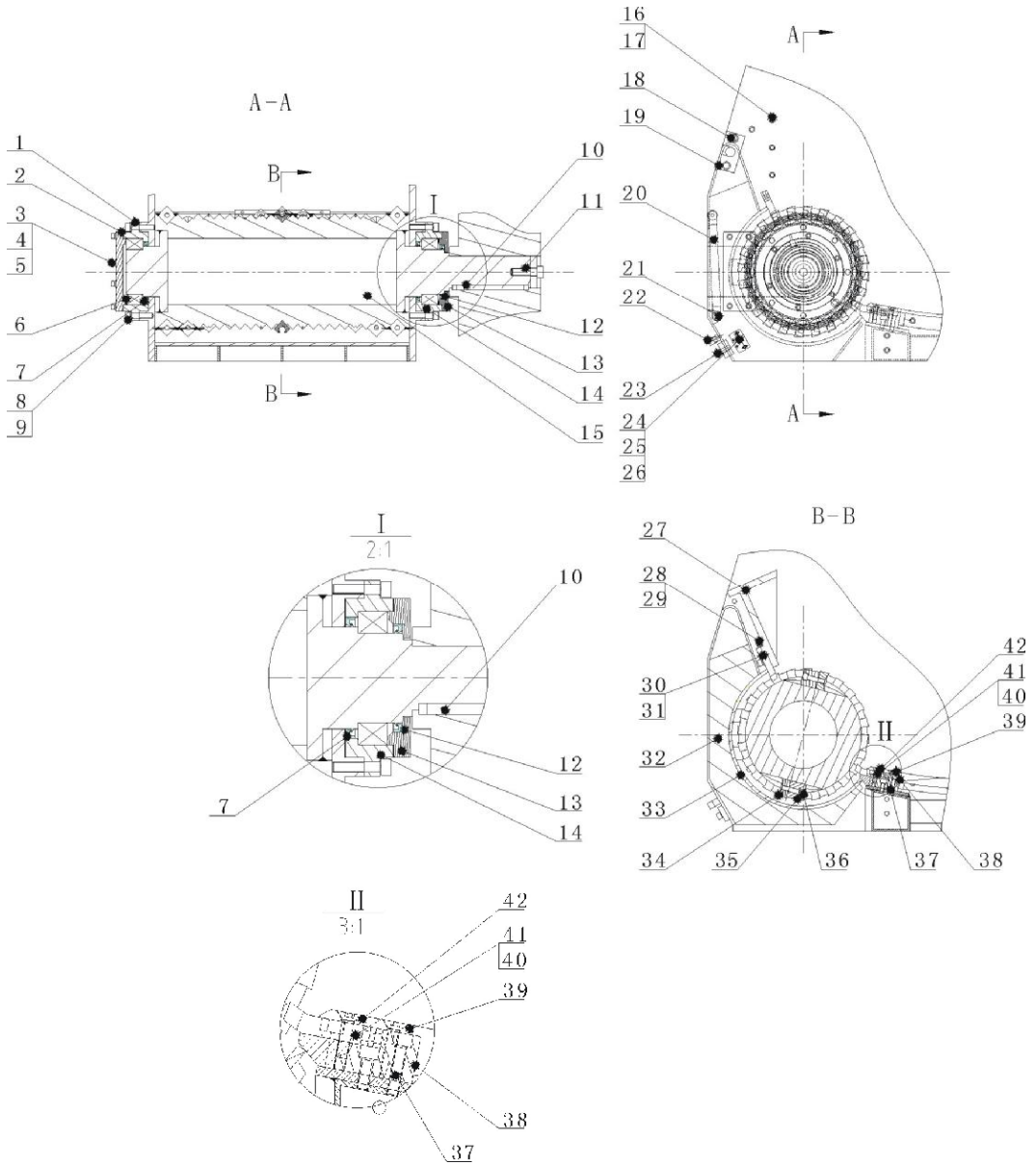
| No. | Name | Part No. | |
|-----|---|---------------|---------------|
| | | SGS-6080S | SGS-75120S |
| 1 | Electric control cabinet assembly drawing | - | |
| 2 | Base dynamic drawing | - | |
| 3 | Support arm buffer assembly drawing | - | |
| 4 | Cutting chamber assembly drawing | - | |
| 5 | Pushing mechanism | - | |
| 6 | Pushing block shield | - | |
| 7 | Right connecting rod | - | |
| 8 | Connecting rod fixed flange | BH11080450040 | BH11080450040 |

* means possible broken parts.

** means easy broken part. and spare backup is suggested.

Please confirm the version of manual before placing the purchase order to guarantee that the item number of the spare part is in accordance with the real object.

2.3.3 Cutting Chamber Structure



Picture 2-8: Cutting Chamber Structure

2.3.4 Cutting Mechanism Parts List

Table 2-2: Cutting Mechanism Parts List

| No. | Name | Parts No. | |
|-----|---|---------------|---------------|
| | | SGS-6080S | SGS-75120S |
| 1 | Left bearing erection loop | BH11801242010 | BW31751201710 |
| 2 | Bearing left end cap | BH10801020010 | BH10751201310 |
| 3 | Inner hex screw M10x40* | YW61104000000 | YW61104000000 |
| 4 | Spring washer Ø10* | YW65012000000 | YW65012000000 |
| 5 | Flat washer Ø12x24* | YW66122400000 | YW66122400000 |
| 6 | Roller bearing 23028CDE4 | YW11230280000 | YW11231300000 |
| 7 | Rotation axis lip-type packing FB160190 | YR20160190000 | YR20182100000 |
| 8 | Inner hex screw M16x70* | YW61167000000 | YW61167000000 |
| 9 | Spring washer Ø16* | YW65016000000 | YW65016000000 |
| 10 | Main shaft key | BH11801070010 | BH11801070010 |
| 11 | Inner hex screw M24x70* | YW61247000000 | YW61247000000 |
| 12 | Rotation axis lip-type packing FB140170 | YR20140170000 | YR20160190000 |
| 13 | Bearing right end cap | BH10801050010 | BH10751200310 |
| 14 | Right bearing rection loop | BH10801320010 | BW31751201810 |
| 15 | Tool rest | BH10801200210 | BH10751200110 |
| 16 | Inner hex screw M12x45* | YW61124500000 | YW61166000000 |
| 17 | Flat washer Ø12x24* | YW66122400000 | YW65016000000 |
| 18 | Inner hex screw M14x30* | YW61143000000 | YW61143000000 |
| 19 | Screen frame fixed block | BH10801560010 | BH10801560010 |
| 20 | Air spring 525x200 90kg | YW01060000100 | YW01170010000 |
| 21 | Cotter pin GB9586 4x30 | YW09254000000 | YW09254000000 |
| 22 | Aluminum square handle | BW20012000040 | BW20012000040 |
| 23 | Inner hex screw M12x45* | YW61123500000 | YW61123500000 |
| 24 | Switch fixed plate | - | - |
| 25 | Inner hex screw M6x25* | YW61062500100 | YW61062500100 |
| 26 | Flat washer Ø6x13* | YW66061300000 | YW66061300000 |
| 27 | Fixed mount manuscript | BH10801060010 | BH10751200410 |
| 28 | Inner hex screw M8x40* | YW61084000000 | YW61085000000 |
| 29 | Hex nut M8* | YW64080600000 | YW64080600000 |
| 30 | Upper left fixed blade | YW43801200000 | BW31751201110 |
| 31 | Upper right fixed blade | YW43801070000 | BW31751201210 |
| 32 | Frame welding drawing | - | - |
| 33 | Screen | BL53801210020 | BL53751200320 |
| 34 | Rotate blade* | YW43801290000 | YW43801290000 |
| 35 | Rotate fixed plate | BH11801290010 | BH11751200410 |

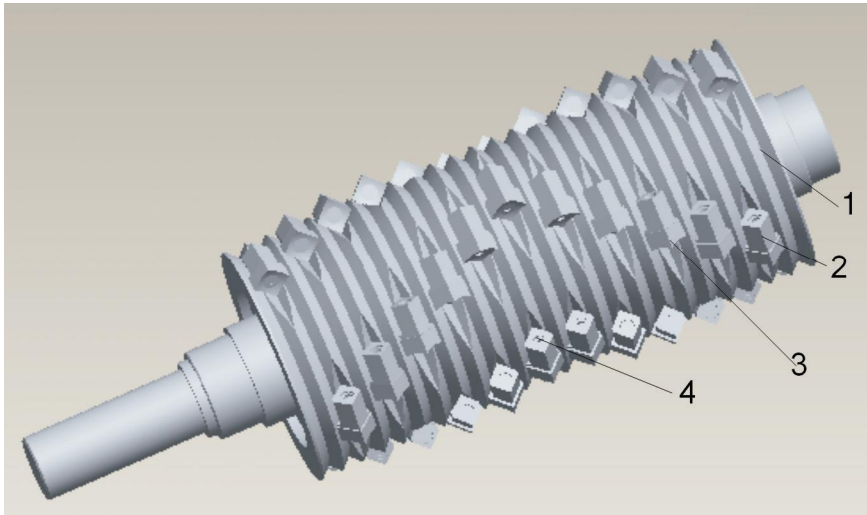
| No. | Name | Parts No. | |
|-----|----------------------------------|---------------|--------------------------------|
| | | SGS-6080S | SGS-75120S |
| 36 | Inner hex screw M14x55* | YW61145500000 | YW61145500000 |
| 37 | Inner hex screw M12x60* | YW61260000000 | YW61124500000 |
| 38 | Lower fixed blade assembly block | BH11801040010 | BH11751207110 BH11751207210 |
| 39 | Inner hex sunk screw M12x50* | YW61250000000 | YW61250000000 |
| 40 | Upper left fixed blade* | YW43801210000 | BW31751201310 |
| 41 | Upper right fixed blade* | YW43801010000 | BW31751201410 |
| 42 | Lower fixed blade pressing block | BH11801210010 | BL53751200420 BL53751200520 |

* means possible broken parts.

** means easy broken part. and spare backup is suggested.

Please confirm the version of manual before placing the purchase order to guarantee that the item number of the spare part is in accordance with the real object.

2.3.5 Blades Assembly



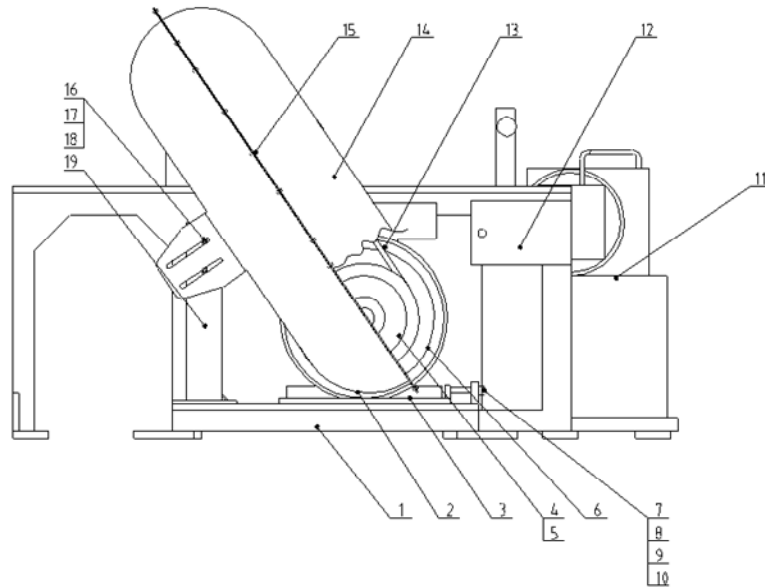
Picture 2-9: Blades Assembly

2.3.6 Blades Assembly Parts List

Table 2-3: Blades Assembly Parts List

| No. | Name | Number | |
|-----|--------------------------|---------------|---------------|
| | | SGS-6080S | SGS-75120S |
| 1 | Main shaft | BH10801200210 | BH10751200110 |
| 2 | Rotate blade fixed block | BH11801290010 | BH11751200410 |
| 3 | Rotate blade | YW43801290000 | YW43801290000 |
| 4 | Inner hex screw M14x55 | YW61145500000 | YW61145500000 |

2.3.7 Driving Medium



Picture 2-10: Driving Medium

2.3.8 Driving Medium Parts List

Table 2-4: Driving Medium Parts List

| No. | Name | Part No. | |
|-----|---------------------------------|---------------|---------------|
| | | SGS-6080S | SGS-75120S |
| 1 | Base welding drawing | - | - |
| 2 | Pulley lower lid | - | - |
| 3 | Motor bottom plate | BH10080120010 | BH10751201810 |
| 4 | Pulley SPC300x4 | YW61330040000 | YW30280800000 |
| 5 | Taper sleeve 3535 (Ø60) | YW30353506000 | YW30353500000 |
| 6 | Motor 37kW, 225S, 1LG4220-4AA60 | YM10422000100 | YM10253400000 |
| 7 | Inner hex screw M12x100 | YW61121000000 | YW61121000000 |
| 8 | Flat washer Ø12x24 | YW66122400000 | YW66122400000 |
| 9 | Inner hex screw M16x100 | YW61161000000 | YW61161000000 |
| 10 | Flat washer 16x30 | YW6613000100 | YW6613000100 |
| 11 | Hydraulic pump | YM90700000100 | YM90343100000 |
| 12 | Wiring box | - | - |
| 13 | V-belt SPC2550 | YR00257000000 | YR00280000000 |
| 14 | Pulley upper lid | - | - |
| 15 | Inner hex screw M5x12 | YW61051200000 | YW61051200000 |
| 16 | Inner hex screw M10x25 | YW61102500000 | YW61102500000 |

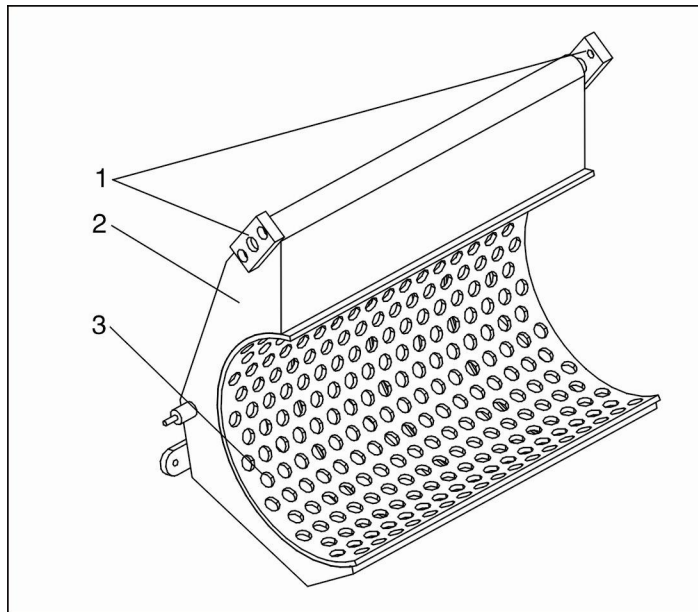
| No. | Name | Part No. | |
|-----|---------------------------|---------------|---------------|
| | | SGS-6080S | SGS-75120S |
| 17 | Hex nut M10 | YW64001000100 | YW64001000100 |
| 18 | Flat washer Ø10x24 | YW66102500000 | YW66102500000 |
| 19 | Pulley cover support seat | - | - |

2.3.9 Screen

Table 2-5: Screen Parts List

| Model | Diameter (mm) | | | |
|------------|---------------|-----|-----|-----|
| | Φ20 | Φ25 | Φ30 | Φ35 |
| SGS-6080S | Φ20 | Φ25 | Φ30 | Φ35 |
| SGS-75120S | Φ20 | Φ25 | Φ30 | Φ35 |

2.3.10 Screen Frame



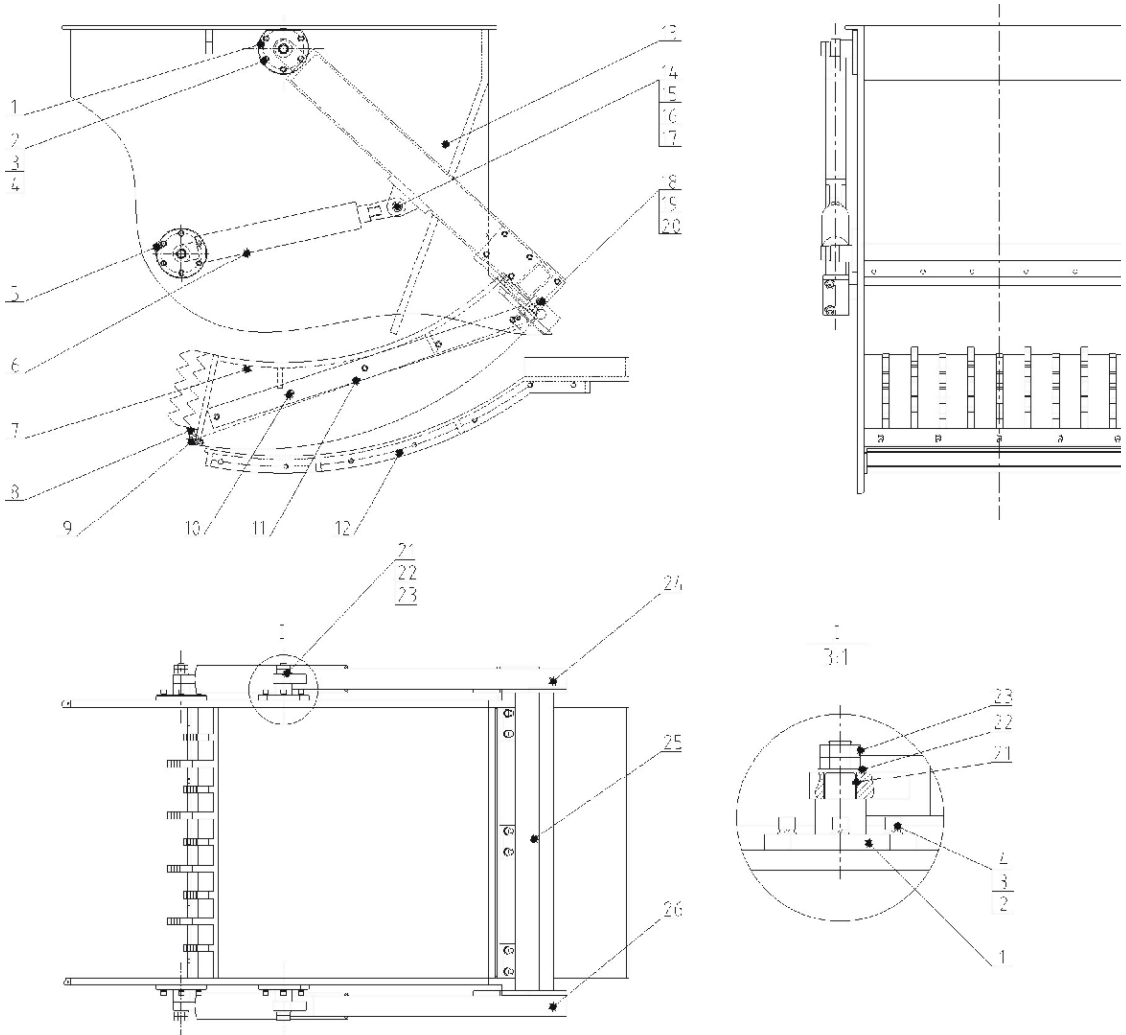
Picture 2-11: Screen Frame

2.3.11 Screen Frame Parts List

Table 2-6: Screen Frame Parts List

| No. | Name | Number | |
|-----|--------------------------|---------------|---------------|
| | | SGS-6080S | SGS-75120S |
| 1 | Screen frame fixed block | BH10801560010 | BH10801560010 |
| 2 | Screen frame | - | - |
| 3 | Screen | BL53801210020 | BL53751200320 |

2.3.12 Pushing Device Assembly



Picture 2-12: Pushing Device Assembly

2.3.13 Pushing Device Parts List

Table 2-7: Pushing Device Parts List

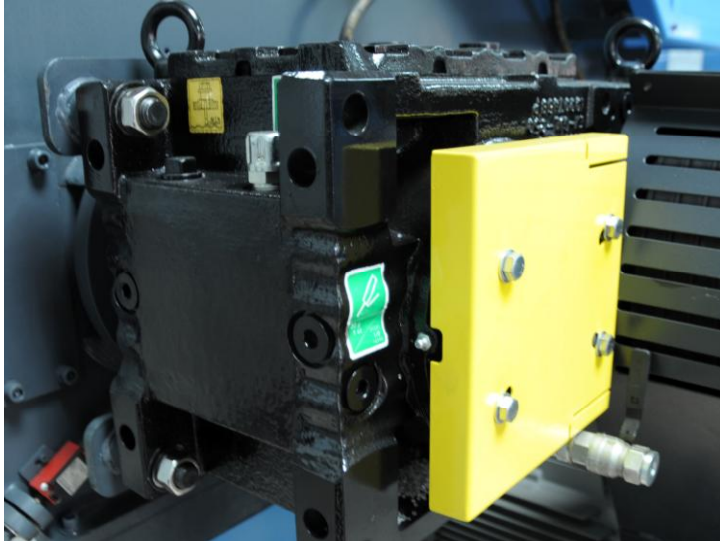
| No. | Name | Part No. | |
|-----|---|---------------|---------------|
| | | SGS-6080S | SGS-75120S |
| 1 | Connecting rod fixed flange | BH11080450040 | BH11080450040 |
| 2 | Inner hex round screw M12x40* | YW61124000000 | YW61124000000 |
| 3 | Flat washer Ø12x24* | YW66122400000 | YW66122400000 |
| 4 | Spring washer Ø12* | YW65012000000 | YW65012000000 |
| 5 | Hydro-cylinder fixed flange | BH11080020040 | BH11080020040 |
| 6 | Hydro-cylinder* MOB63x420-CA-I | YM90700000100 | YM90343100000 |
| 7 | Pushing block welding drawing | - | - |
| 8 | Pushing bar* | BH10080050010 | BR90751200010 |
| 9 | Locknut M12* | YW64101100000 | YW64101100000 |
| 10 | Inner hex round screw M10x35* | YW61103500000 | YW61103500000 |
| 11 | Gibb lock* | BH10080060010 | BH10080060010 |
| 12 | Cutting chamber base plate | - | - |
| 13 | Cutting chamber welding drawing | - | - |
| 14 | Connecting hinge pin | BH11080080040 | BH11080080040 |
| 15 | Bolt lock check ring | BH11080090040 | BH11080090040 |
| 16 | Flat washer Ø30x56* | YW66305400000 | YW66305400000 |
| 17 | Tacking bolt M8x12* | - | - |
| 18 | Sensor fixed plate | - | - |
| 19 | Inner hex round screw M5x25* | YW61052500200 | YW61052500200 |
| 20 | Flat washer Ø5x56* | YW66051000000 | YW66051000000 |
| 21 | Connecting rod bearing* | YW33801200000 | YW33801200000 |
| 22 | Flat washer Ø24x44* | YW66024400000 | YW66024400000 |
| 23 | Hex nut M24* | YW64002400100 | YW64002400100 |
| 24 | Left connecting rod | - | - |
| 25 | Connecting rod erection fixture welding drawing | - | - |
| 26 | Right connecting rod | - | - |

* means possible broken parts.

** means easy broken part. and spare backup is suggested.

Please confirm the version of manual before placing the purchase order to guarantee that the item number of the spare part is in accordance with the real object.

2.3.14 Reduction Gear



Picture 2-13: Reduction Gear

1. Installation and Use

For connection of high speed shaft and other parts, hammering is not allowed. Users can rotate bolts into shaft-end holes and press fastenings. After install reduction gear, rotate it manually to ensure smooth rotation. Without loading condition, operate device for 2 hours. If you find uneven sounds, overheat and oil leakage, please shut it down and contact Shini Company.

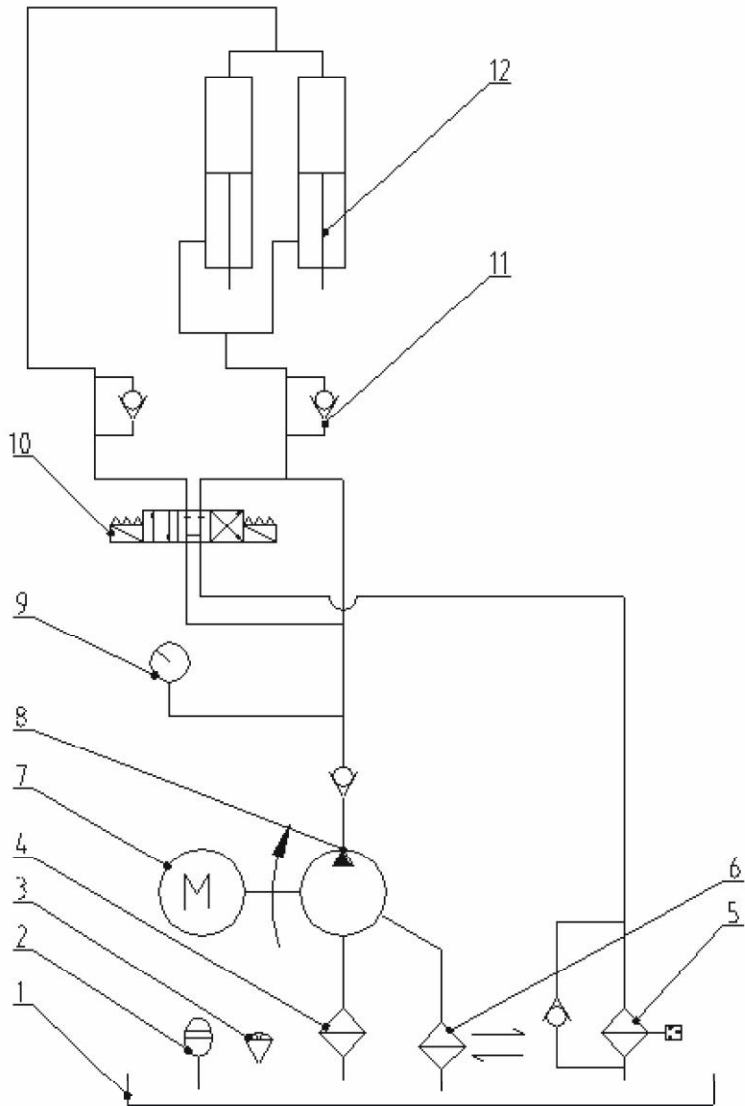
During installing torque arm, make point of connection being vertical with output shaft axis, deviation is $\pm 5^\circ$.

2. Lubrication

Use VG46 gear oil to lubricate reduction gear, do not use additives containing graphite or molybdenum disulfide. After first oil filling, run the machine for 2 hours then replace oil. Replace the oil after 6 months or 2500 hours running.

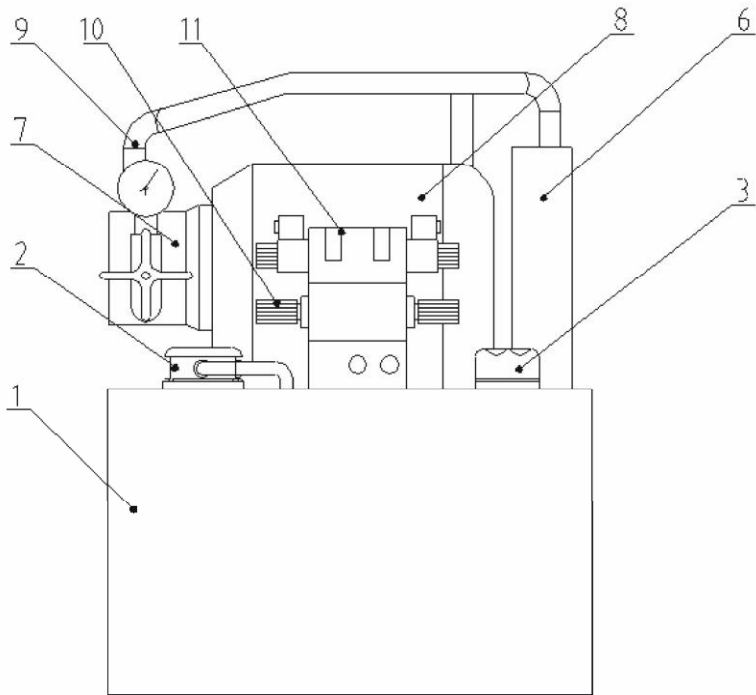
2.3.15 Hydraulic System

2.3.15.1 Principle of Hydraulic System



Picture 2-14: Principle of Hydraulic System

2.3.15.2 Hydraulic Pump Station



Picture 2-15: Hydraulic Pump Station

2.3.15.3 Hydraulic System Parts List

Table 2-8: Hydraulic System Parts List

| No. | Name | No. | Name |
|-----|--------------------------|-----|-------------------------------|
| 1 | Oil tank 100L | 7 | Oil pump VPF-30 |
| 2 | Dipstick 3" | 8 | Motor 3HP |
| 3 | Oil filler 63 | 9 | Oil meter 250kg |
| 4 | Precise filter screen 08 | 10 | Shuttle valve DSG-03-3C6-A5 |
| 5 | Return oil filter 40L | 11 | Throttle valve MTC-03W |
| 6 | Air cooler 407 | 12 | Hydro-cylinder MOB63x420-CA-I |